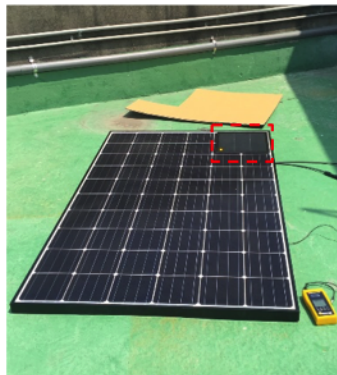


# c-Si PERC Mono(295W) VS CIGS(345W) Shading test

Shading 6%



Power remain:  
63.7%

Shading 8%



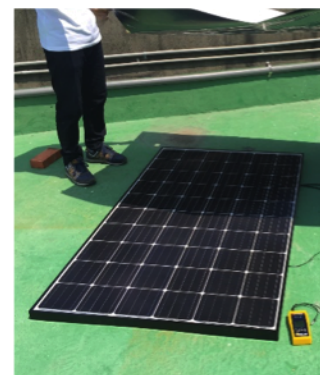
Power remain:  
0.2%

Shading 12.5%



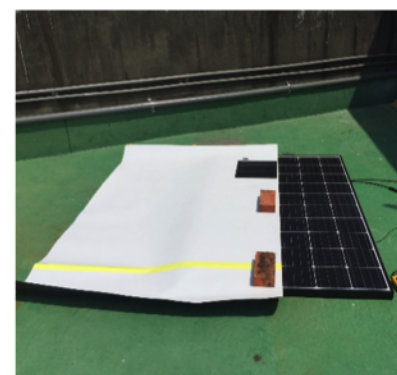
Power remain:  
39.5%

Shading 50%



Power remain:  
21.9%

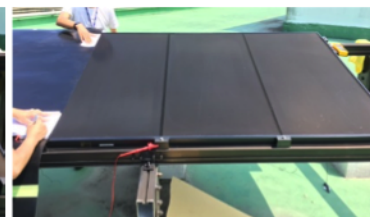
Shading 50%



Power remain:  
40.9%



Power remain:  
92.9%



Power remain:  
71.7%



Power remain:  
82.3%



Power remain:  
38.4%



Power remain:  
56.9%